

 coolsculpting® ELITE

# GET THE ELITE *Experience*

Eliminate fat  
with the most advanced  
CoolSculpting® system yet.

**NEW!**

Joli was treated  
with CoolSculpting  
on her abdomen.  
Results may vary.

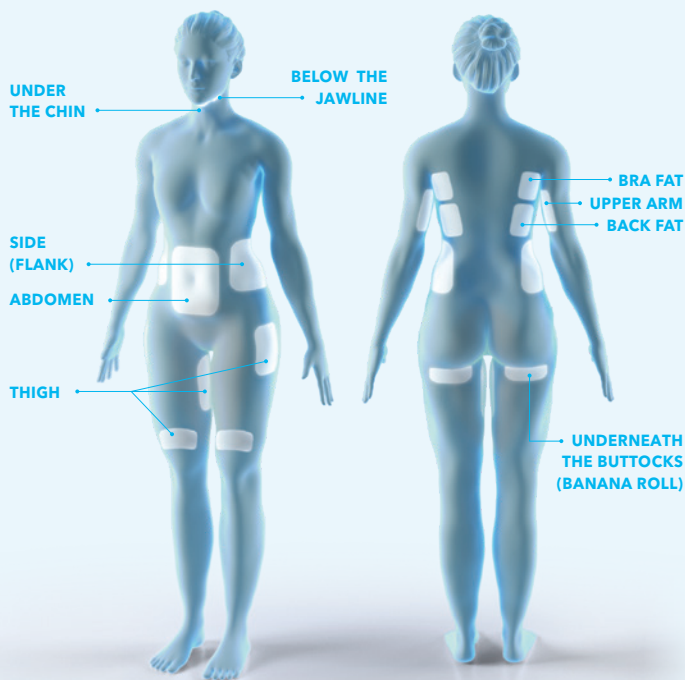
## Uses

**CoolSculpting® Elite** is FDA-cleared for the treatment of visible fat bulges in the submental (under the chin) and submandibular (under the jawline) areas, thigh, abdomen, and flank, along with bra fat, back fat, underneath the buttocks (also known as banana roll), and upper arm. It is also FDA-cleared to affect the appearance of lax tissue with submental area treatments. **CoolSculpting® Elite** is not a treatment for weight loss.

**Please see Important Safety Information within.**

# Eliminate FAT IN 9 AREAS

## TREATED FAT CELLS ARE GONE *For Good*<sup>1,\*</sup>



NEW **CoolSculpting® Elite** is the one and only treatment FDA-cleared to eliminate fat in 9 different areas of the body—more than any other nonsurgical fat reduction technology.

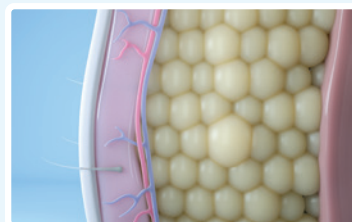
### Important Safety Information

This procedure is not for everyone. You should not be treated with **CoolSculpting® Elite** if you suffer from cryoglobulinemia, cold agglutinin disease, or paroxysmal cold hemoglobinuria.

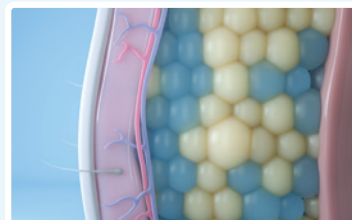
Tell your doctor if you have any medical conditions including recent surgery, pre-existing hernia, and any known sensitivities or allergies.

**Please see additional Important Safety Information throughout.**

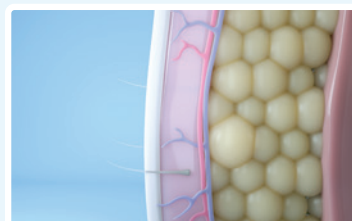
The **CoolSculpting Elite** treatment is an innovative, nonsurgical way to contour your body by safely and effectively freezing stubborn fat away.



Many of us have stubborn fat despite diet and exercise.



**CoolSculpting Elite** effectively targets and freezes fat cells without damaging the skin or surrounding tissues.



In the weeks that follow, the body naturally processes and eliminates these dead fat cells. Treated fat cells are gone for good!<sup>1,\*</sup>

\*Study based on an animal model.

# ELEVATE YOUR *Experience*

NEW **CoolSculpting® Elite** is designed to help you achieve your body contouring goals.



- Freeze **2x the stubborn fat** and save time with our new dual applicators\*
- Reimagined applicators are larger and shaped to **better fit your natural curves**<sup>2,4,†</sup>
- Delivers up to **20% to 25% reduction in fat layer thickness** after a single session<sup>5,‡</sup>

**CoolSculpting Elite treatment requires no surgery and little to no downtime, so you can get back to your busy day.**

\*Dual applicators with CoolSculpting Elite allow more treatments in the same amount of time, as compared to using 1 applicator.

†The Elite Curve 240™ applicator features an 18% larger cooling area than the previous generation CoolSculpting applicator.

‡In a clinical study of 10 subjects, up to 20% to 25% fat layer reduction was seen at 2 and 6 months.

### **CoolSculpting® Elite Important Safety Information**

During the procedure you may experience sensations of pulling, tugging, mild pinching, intense cold, tingling, stinging, aching, and cramping at the treatment site. These sensations subside as the area becomes numb. Following the procedure, typical side effects include temporary redness, swelling, blanching, bruising, firmness, tingling, stinging, tenderness, cramping, aching, itching, or skin sensitivity, and sensation of fullness in the back of the throat after submental or submandibular area treatment.

**Please see additional Important Safety Information throughout.**

Joli was treated with CoolSculpting on her abdomen. Results may vary.



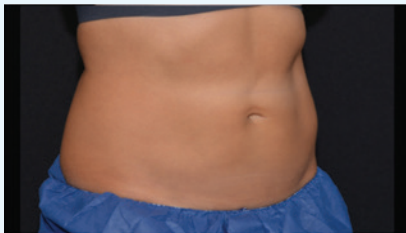
## Real PATIENTS



**BEFORE**



**AFTER FIRST SESSION**  
(8 weeks)



**AFTER SECOND SESSION**  
(4 weeks)

Patient was treated with CoolSculpting®.

**Results and patient experience may vary.**

**Q: How much does CoolSculpting Elite treatment cost?**

**A:** Every body is unique and so is every budget. That's why your provider will create a personalized Treatment Plan and pricing to address your area(s) of concern and the number of sessions needed to achieve your goals. Talk to your provider today to get started.

**Q: When will I see results?**

**A:** Results may be seen as early as 1 to 3 months after treatment. Treatment plans may take place over 2 or more treatment sessions. Talk to your provider to find out how you can achieve the transformational results you're looking for.

**Important Safety Information (continued)**

Rare side effects may also occur. CoolSculpting® Elite may cause a visible enlargement in the treated area, which may develop 2 to 5 months after treatment and requires surgical intervention for correction.

## Real RESULTS



**BEFORE**



**AFTER FIRST SESSION**  
(12 weeks)



**AFTER SECOND SESSION**  
(15 weeks)

Patient was treated with CoolSculpting.

**Results and patient experience may vary.**

**Q: What does it feel like during the treatment?**

**A:** During your treatment, a gel pad or a gel and applicator are applied to the targeted area. Applicators that use vacuum suction will draw the tissue into the applicator cup. Controlled cooling is then delivered to the treatment area. You may feel intense cold or experience sensations of pulling, mild pinching, tingling, stinging, or cramping temporarily. These sensations typically subside within 10 minutes as the area becomes numb. Many patients read or even take a nap during their sessions. Afterward, patients are usually able to return to normal activities.

[Learn more at coolsculpting.com](https://www.coolsculpting.com)

Please see full Important Safety Information for CoolSculpting® Elite.



Alle

**Discover your exclusive patient loyalty program.**

Become a member in a few simple steps to earn and redeem rewards on **CoolSculpting® Elite** and other Allergan Aesthetics products.

**Visit [Alle.com](http://Alle.com) to join.**

**Ask your provider if NEW  
CoolSculpting Elite is right for you,  
or go to [coolsculpting.com](http://coolsculpting.com) to learn more.**

Before-and-after photos courtesy of Bodify® and Steven Sorr, NMD.

**References:** **1.** Zelickson B, Egbert BM, Preciado J, et al. Cryolipolysis for noninvasive fat cell destruction: initial results from a pig model. *Dermatol Surg.* 2009;35(10):1462-1470. **2.** Data on file, Allergan, April 15, 2020; Summary of Clinical Fit and Function Study Testing of V003 Cups (CS-305218-B). **3.** Data on file, Allergan; V3 Applicator Specifications. **4.** Data on file, Allergan; Applicator Specifications. **5.** Coleman SR, Sachdeva K, Egbert BM, Preciado J, Allison J. Clinical efficacy of noninvasive cryolipolysis and its effects on peripheral nerves. *Aesthetic Plast Surg.* 2009;33(4):482-488.

**Allergan  
Aesthetics**  
an AbbVie company

COOLSCULPTING® COOLSCULPTING® ELITE, and the Snowflake Design are trademarks of Zeltiq Aesthetics, Inc., an AbbVie company. © 2020 AbbVie. All rights reserved. CSC141998 12/20 008255